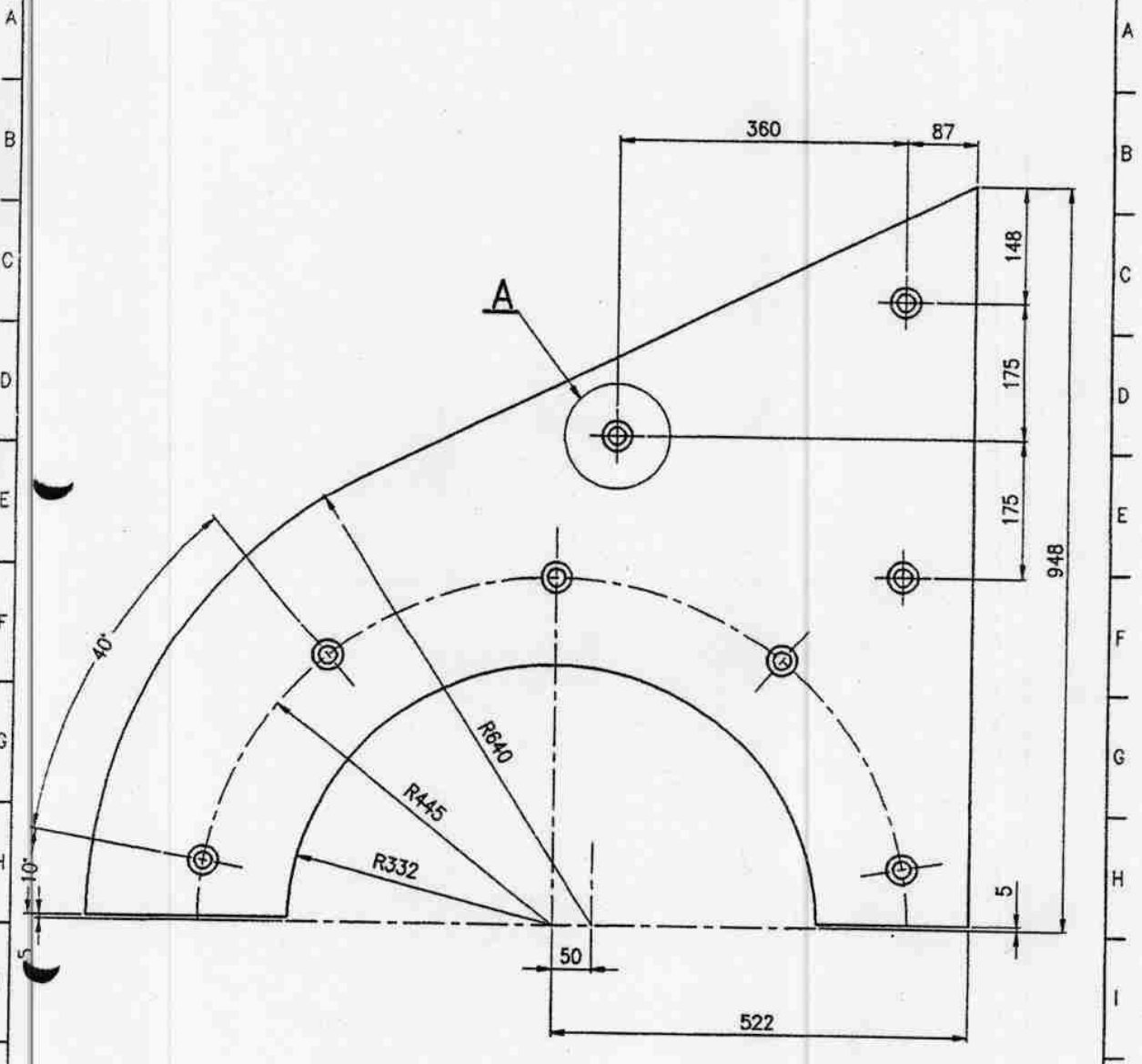


کامر رولر

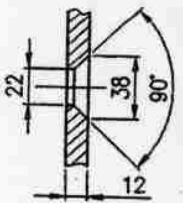
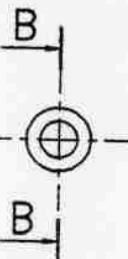
1 2 3 4 5 6 7 8 9



A
(1:2)

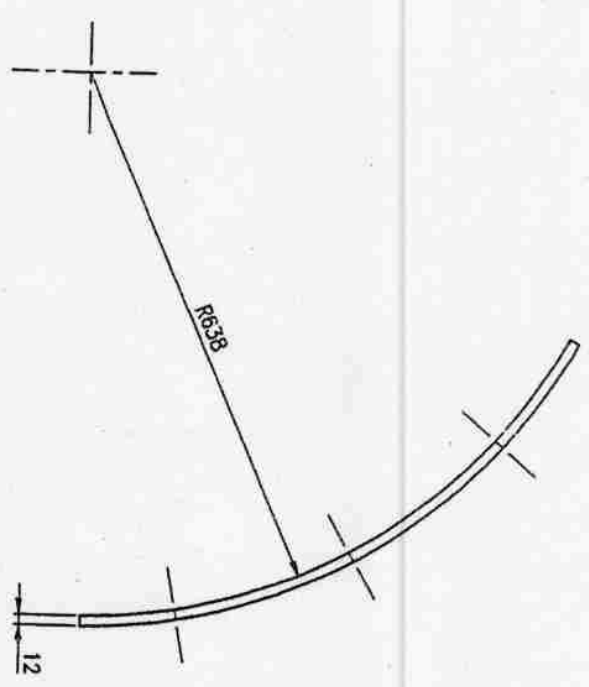
B-B
(1:2)

5.567776 27
04.01.01-7 P20



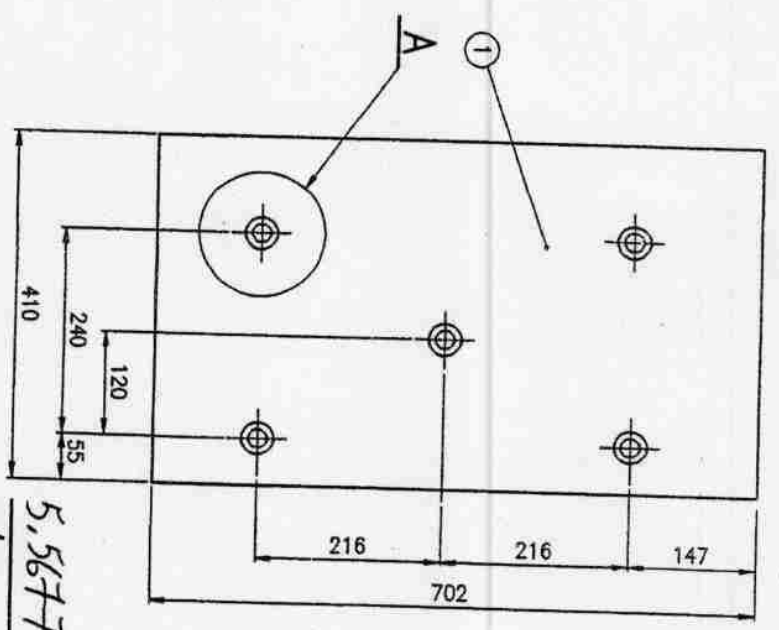
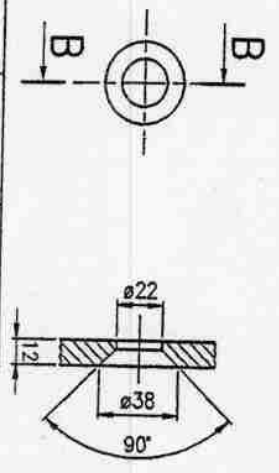
Revision	14OCT99	JTr	LB-J	LJK	L-7,8
Original	12OCT99	JTr	LB-J	LJK	Revision in zone: / Description:
Scale:	Date	Sign.	Sign.	Sign.	Mat.: 1140 kg: 77
1:5		Drawn	Chkd.	Appr.	Welds: ISO-E ISO-E
Hammer Crusher CC 110 Revolvable upper part Wear plate					<input checked="" type="checkbox"/> Pattern number, embossed / countersunk Unless otherwise specified, adhere to General Workshop Instructions No. 520530. PC:
F.L.SMITH					No.: 3.208706 Rev. 1

کام در روز اول



A
(1:2)

B-B
(1:2)



① Development.

Revision	04APR01	JTR	LK	Juk	all over
Original	09JUN00	JTR	LB-J	OS	Revision in zone: / Description:
Scale:	1:5	Drawn	Sign.	Appr.	Mtd.: 1140
		Drawn	Chkd	Appr.	Welds: ISO-E

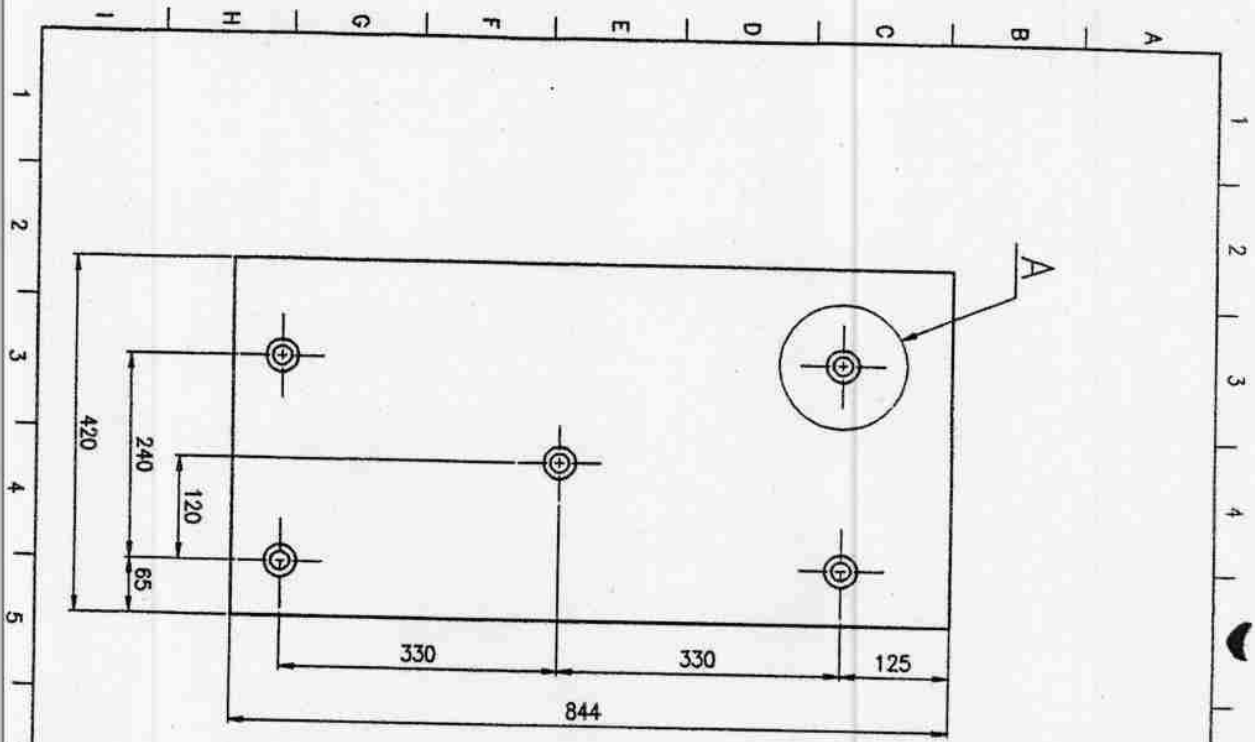
Hammer Crusher CC 110x300
Revolvable upper part
Wear plate

⊗ Pattern number, embossed / countersunk
Unless otherwise specified, adhere
to General Workshop Instructions No. 520530.

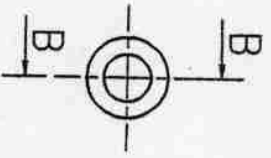
5.567776 27
04.01.02-F P22

LSMIDTH	
No.: 3.208880	Rev: 1

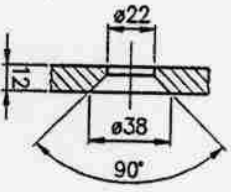
5.567776



$\frac{A}{(1:2)}$



$\frac{B-B}{(1:2)}$



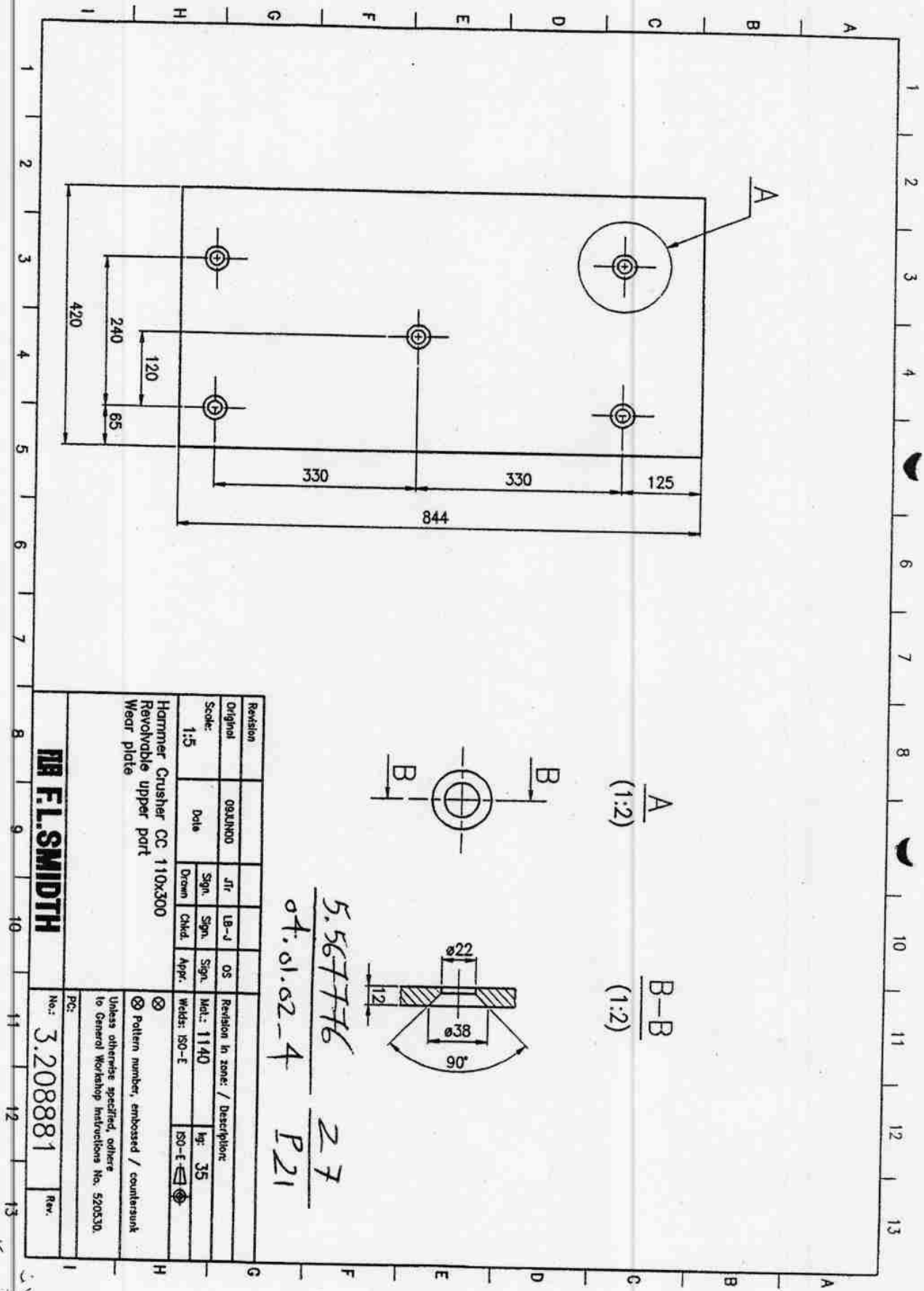
5.567776
04.01.02-4
27
P21

Revision	Date	Jr. Sign.	LB-J Sign.	OS Sign.	Appr.	Revision in zone: / Description	kg
Original	09JUN00						35
Scale:	1:5						
Hammer Crusher CC 110x300 Revolvable upper part Wear plate							
<input checked="" type="checkbox"/> Pattern number, embossed / countersunk <input checked="" type="checkbox"/> Unless otherwise specified, others to General Workshop Instructions No. 520530.							

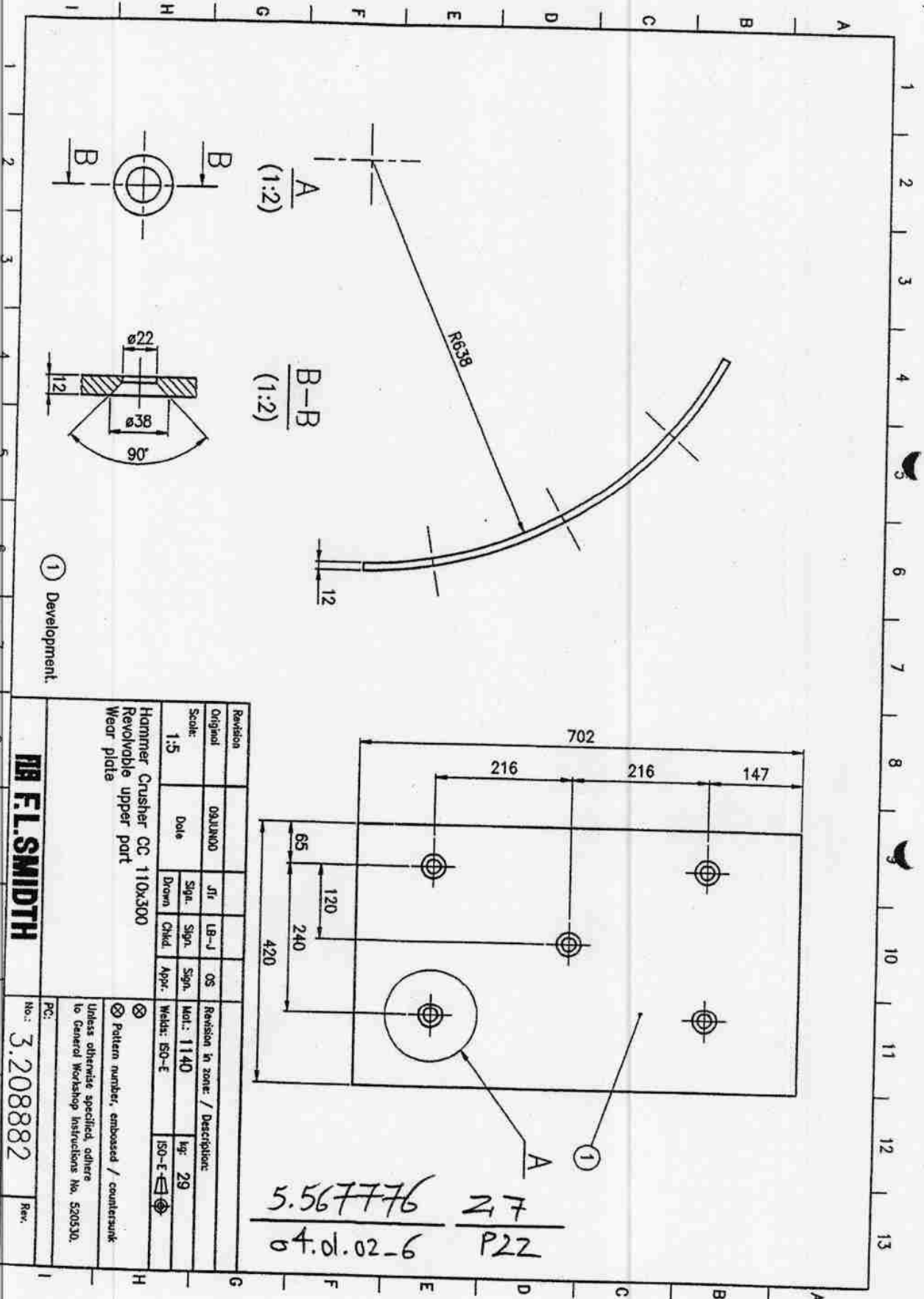
DR F.L.SMIDTH

No.: 3.208881

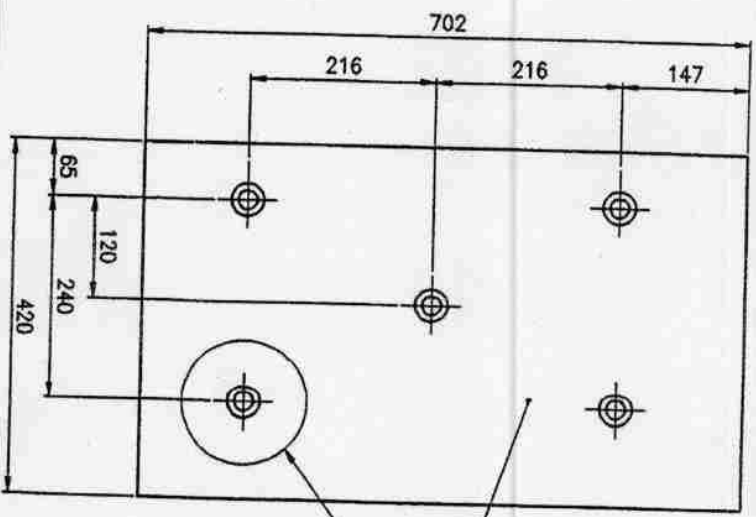
Rev.



نامہ درجہ روٹنگ



① Development.



5.567776 27
 04.01.02-6 P22

Revision	Date	Jr.	LB-J	OS	Revision in zone / Description
Original	09.11.00				
Scale:		Sign.	Sign.	Sign.	Mat.: 1140
1:5		Drawn	Chkd.	Appr.	Welds: ISO-E

Hammer Crusher CC 110x300
 Revolvable upper part
 Wear plate

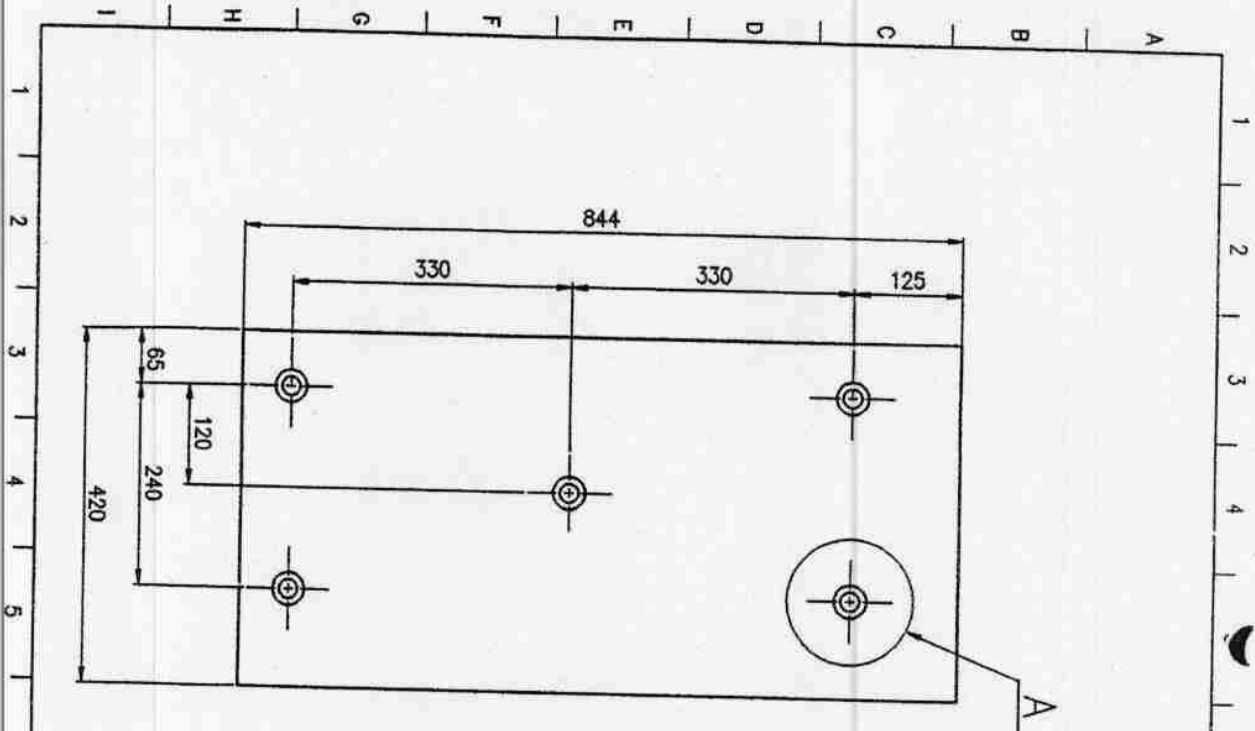
⊗ Pattern number, embossed / countersunk
 Unless otherwise specified, adhere to General Workshop Instructions No. 520530.

FB F.L.SMIDTH

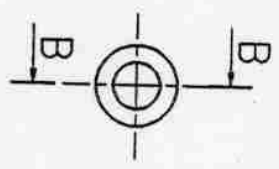
No.: 3.208882

Rev.

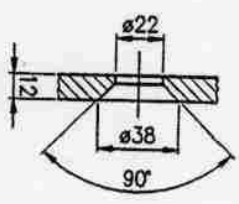
کامر کرور



A
(1:2)



B-B
(1:2)



5.567776 Z 7
ot. d. 02-3 P 21

Revision	Original	Scale:	Date	Drawn	Chkd.	Appr.	Welder	ISO-E	Revision in zone / Description:
	09AJUN00	1:5		JTR	LB-J	OS	Md.: 1140	kg 35	
Hammer Crusher CC 110x300 Revolvable upper part Wear plate									
ⓧ Pattern number, embossed / countersunk Unless otherwise specified, adhere to General Workshop Instructions No. 520530.									

F. L. SMIDTH

No.: 3.208883

Rev.

کامپوزیٹ

Clinker Breaker
CC 110x300
Revolvable upper part



Parts list No. 5.567776 EE
MGN Code/Id.

Sheet No.
04.01.01

Designation	No req.	Drawing	Code Dimension Manufacturer (Pattern)	Mat	Total Kg.
01 Assembly drawing		1.239078 ✓	۲۲		
02					
03					
04 Upper part	1	2.234379 ✓	۲۲	1100	756
05					
06 Wear plate	1	3.208705 ✓	۲۲	1140	34
07 Wear plate	1	3.208706 ✓	۲۲	1140	34
08 Screw	69		0343.M20x70	8.8	11
09 Nut	138		0113.M20	8	8
10					
11 Clevis pin	3	7.000078 ✓	.36x100 ۲۲	2001	3
12 Washer	6	7.000079 ✓	.36 ۲۲	1100	1
13 Split pin	6		0840.8x50		0
14					
15 Screw	24		0223.M24x65	8.8	8
16 Screw	7		0223.M24x45	8.8	2
17 Nut	21		0113.M24	8	3
18 Spring washer	31		0720.M24	x)	1
19					
20 Packing gland	2	3.120461 ✓	۲۲	1100	18
21 Packing	1		16x4300 CHESTERTON	x)	2
22 Stud	20	7.000120 ✓	.M12x45 ۲۲	2100	1
23 Nut	40		0113.M12	8	1

x)Line

18: Spring steel HRC 44-51
21: Super Graphite Packing, Style Two.

Date	Sign.	Kg.
14012002	LIK	883.0
Rev.	Line.	Week.
		Sign.

Handwritten signature or mark at the top center of the page.

Clinker Breaker
CC 110x300
Revolvable upper part



Parts list No. 5.567776 EE
MGN Code/Id.

Sheet No.
04.01.02

Designation	No req.	Drawing	Code Dimension Manufacturer (Pattern)	Mat	Total Kg.
01					
02 Wear plate	3	3.207740	✓ دوبل	1140	180
03 Wear plate	1	3.208883	✓ دوبل	1140	35
04 Wear plate	1	3.208881	✓ دوبل	1140	35
05 Wear plate	3	3.207743	✓ دوبل	1140	150
06 Wear plate	1	3.208882	✓ دوبل	1140	29
07 Wear plate	1	3.208880	✓ دوبل	1140	29
08					
09					
10					
11					
12					
13					
14					
15					
16					
17					
18					
19					
20					
21					
22					
23					

x) Line	Date	Sign.	Kg.
	14012002	LIK	458.0
Rev.	Line.	Week.	Sign.

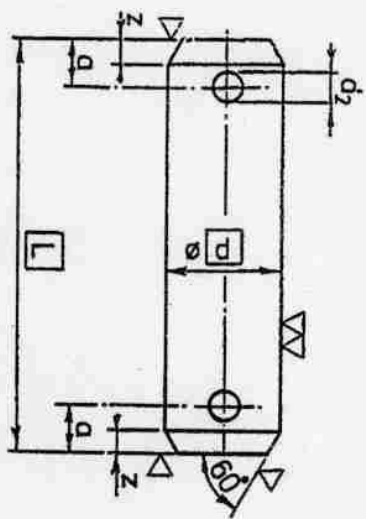
520530

Die mit ∇ bezeichneten Maße sind Richtmaße.
Maßabweichung $\pm 0,1$ mm. Die ∇ kann verwendet werden.
Für weitere Maße siehe Stückliste oder Bestellung.

Les normes des instructions 520530 doivent être respectées.
Les cotes précédées de ∇ sont pour gouverner seulement.
Un article courant comme p. ex. _____ peut être utilisé.
Pour les cotes encadrées, voir nomenclature ou commande.

Deben seguirse estrictamente las normas técnicas de instrucciones 520530.
Las medidas con ∇ son de orientación solamente.
Puede emplearse un artículo corriente p. ej. _____
Para las medidas encuadradas, véase lista de precios o nota de pedido.

dXL



d	5	6	8	10	12	14	16	18	20	22	24	24 (27)
d2	1,2	1,6	2	3,2		4			5			6,3
a	2,9	3,2	3,5	4,5	5,5	6	7	8	8			9
z	2			3			4			4		

d	30	32 (33)	35 (36)	40	45	50	55	60	70	80	90	100
d2	8			10			13			16		
a	10			12			14			16		
z	4			6			6			6		

F.L. SMIDTH **fls**

Clevis pins with split pin holes

Mal. 1/0 tol. h11
No. 7.000078

For framed dimensions, see parts list or order.
Stock quality such as _____
may be used.
Dimensions preceded by ∇ are for guidance only.
Stücklisten in instructions 520530 must be adhered to.

Indiannemede måli: se stykliste eller ordre.
Handelsvare, f. eks. B ISO 2340, kan benyttes.
Mål med ∇ er kun til orientering.
Normer i instruktion 520530 skal overholdes.

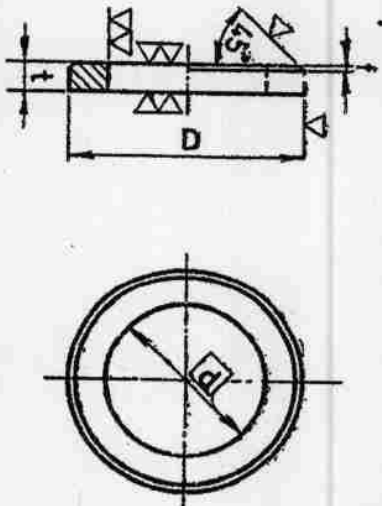
5.567776 27
02.dl.02-1 P16

5.567776 27
02.01.02-4 P16

Die in der Anweisung 520530 angeführten Normen sind einzuhalten.
Die mit \approx bezeichneten Maße sind Richtmaße.
Handelsware, z. B. DIN 1440, kann verwendet werden.
Umrissmaße: siehe Zeichnung oder Bestellung.

Las normas de instrucciones 520530 deben ser respetadas.
Los cotas precedidas de \approx son para guiar solamente.
Un article couvert comme
D. est: _____ peut être utilisé.
Pour les cotas encadrées, voir documentation ou commande.

Debem seguir exactamente las normas dadas en las instrucciones 520530.
Las medidas con \approx son de orientación solamente.
Puede emplearse un artículo corriente,
p. ej. DIN 1440.
Para las medidas encadradas, véase lista de piezas o nota de pedido.



4	5	6	8	10	12	14	16	18	20	22	24	27	30	33	36	40	45	50	55	60	70	80	90	100			
H11	+0,075	+0,090				+0,110				+0,130					+0,160					+0,190		+0,220					
D	1,0	1,2	1,6	2,0	2,5	3	3	3	3	4	4	4	4	4	5	5	5	5	6	7	8	9	9	10	12	12	14
t	0,3	0,4	0,5	0,5	0,5	0,5	0,5	1	1	1	1	1	1	1	1,5	1,5	1,5	1,5	2	2	2	2,5	2,5	3			



F.L. SMIDTH NIS

Wanderr, height, for alvars plus

Mel. 130

PKr 10.74

No. 7.000079

For framed dimensions, see parts list or order.
Stock quality such as _____ may be used.

Dimensions preceded by \approx are for guidance only.
Standards in instructions 520530 must be adhered to

Indrummått måli: se skissor eller order.
Handelsvara, t. ex. DIN 1440, kan användas.

Mått med \approx är kun till orientering.
Normer i instruktion 520530 skall övervakas

Die in der Anweisung 520530 angeführten Normen sind einzuhalten

Die mit \approx bezeichneten Maße sind Richtmaße. Handelsware, z. B. DIN 939 kann verwendet werden. Umrahmte Maße: siehe Stückliste oder Bestellung.

Gewinde: ISO-Toleranzfeld 6g

Los normas de instrucciones 520530 doivent être respectées

Les cotes précédées de \approx sont pour gouverne seulement. Un article couvrant comme

P. ex.: peut être utilisé. Pour les cotes encadrées, voir nomenclature ou commande.

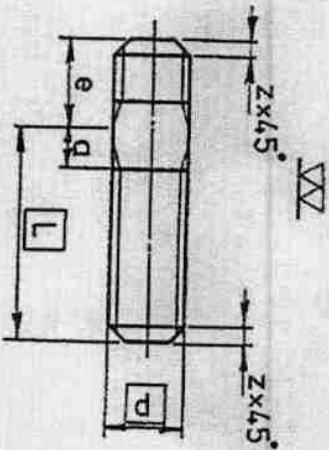
Filetages: Tolérance ISO 6g

Deben seguirse exactamente las normas dadas en las instrucciones 520530

Las medidas con \approx son de orientación solamente. Puede emplearse un artículo corriente.

P. ej. Para las medidas encuadradas, véase lista de piezas o nota de pedido. Roscas: Clase de tolerancia ISO 6g

$d \times L$



d	M6	M8	M10	M12	M16	M20	M22	M24	M27	M30	M33	M36	M39	M42	M45	M48	M52	M56	M60	M64
a	5,5	6	6,5	7	8	9	9	10	10	11	11	13	13	14	14	15	15	16	16	18
$e \approx$	7,5	10	12	15	20	25	28	30	35	38	42	45	50	52	58	60	65	70	75	80
z	1,5	1,9	2,3	2,6	3	3,8	3,8	4,5	4,5	5,3	5,3	6	6	6,8	6,8	7,5	7,5	8,3	8,3	9

5.567776 217
04.dl.01-22 P21

FLS MICRO week 936

Thread: ISO tolerance class 6g

For framed dimensions, see parts list or order. Stock quality such as _____ may be used.

Dimensions preceded by \approx are for guidance only. Standards in Instructions 520530 must be adhered to

Gewind: ISO toleranzklasse 6g

Indremmede mål: se stykliste eller ordre. Handelsware, f. eks. DIN 939 kan benyttes.

Mål med \approx er kun til orientering. Normer i instruksjon 520530 skal overholdes

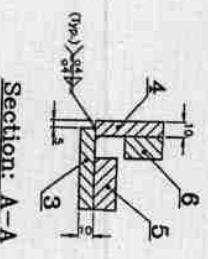
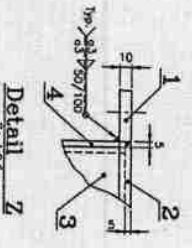
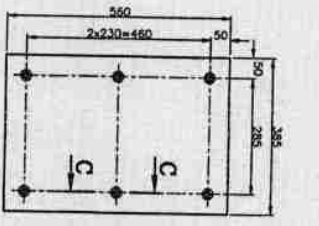
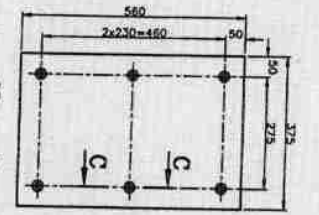
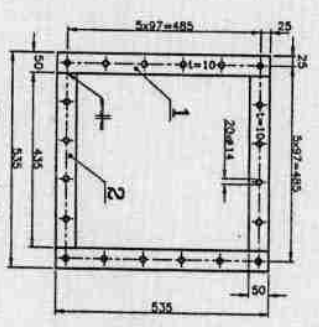
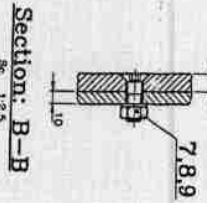
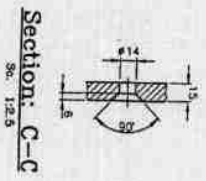
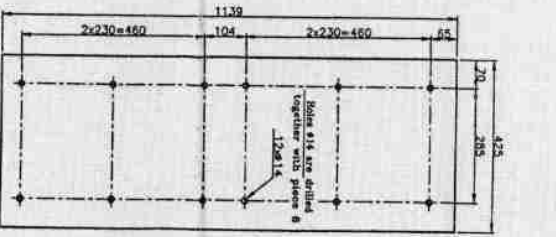
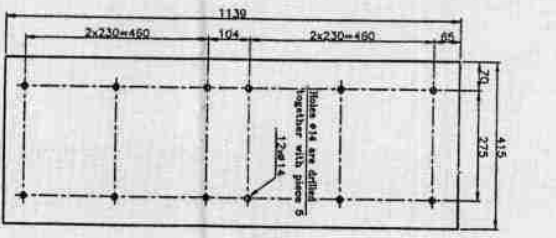
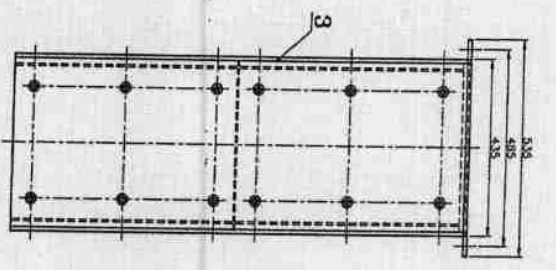
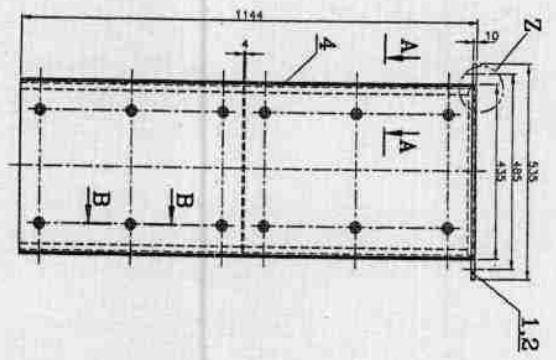
F.L.SMIDTH FLS

Studs with full thread length

Depth of engagement $e \approx 1,25 \times d$

Mat. 202 (5.6) No. 7.000120
PKr 4.76

کارخانه سیمان داراب



داراب سیمان کارخانه

No.	Description / Part name	Unit	Qty	FSR	Q.R
9	Springs Lock Washer - A12 DIN1127	24	24	0.08	1.92
8	Hec. Nut M12 - DIN934	24	24	0.42	10.08
7	Con. Head Cap Screw - M12x40 - DIN7991	24	24	0.82	19.68
6	Pl. 13x35x5x60	2	2	50.48	100.96
5	Pl. 13x37x5x60	2	2	49.14	98.28
4	Pl. 16x42x5x1139	2	2	75.85	151.70
3	Pl. 16x41x5x1139	2	2	74.07	148.14
2	Pl. 50x10x435 Lg	2	2	3.37	6.74
1	Pl. 50x10x435 Lg	2	2	3.37	6.74

Customer/Project	Contract No.	Project No.	Scale	Sheet No.	Total Sheets
DARAB CEMENT PLANT	181	181	1:25	2-035-005	2-035-005

فهرست مدیریت احداث
Ehdos Management Co.
Lower chute

Project No. 181
Scale 1:25
Sheet No. 2-035-005
Total Sheets 2-035-005