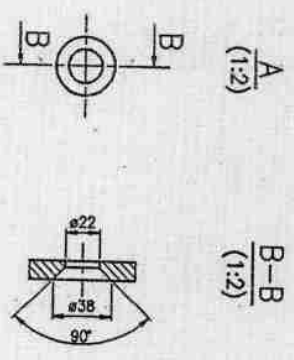
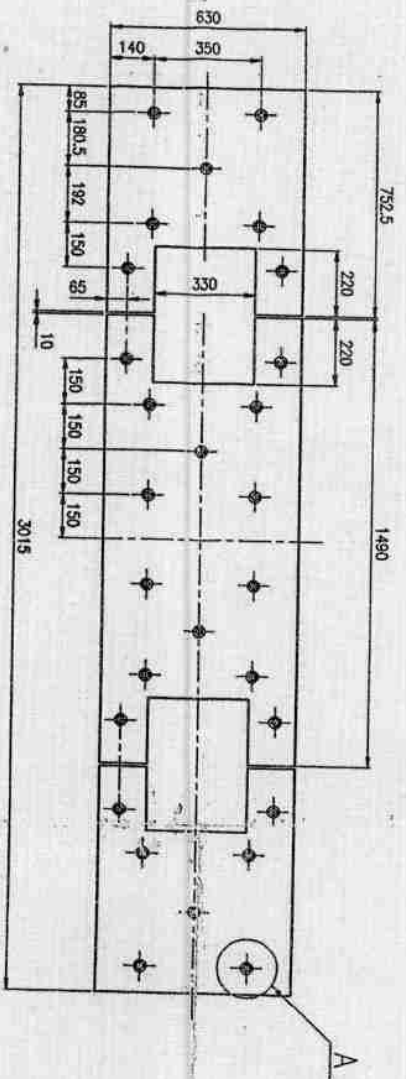


Handwritten signature or initials at the top of the page.



5.567776 27
02.01.01-10 P13

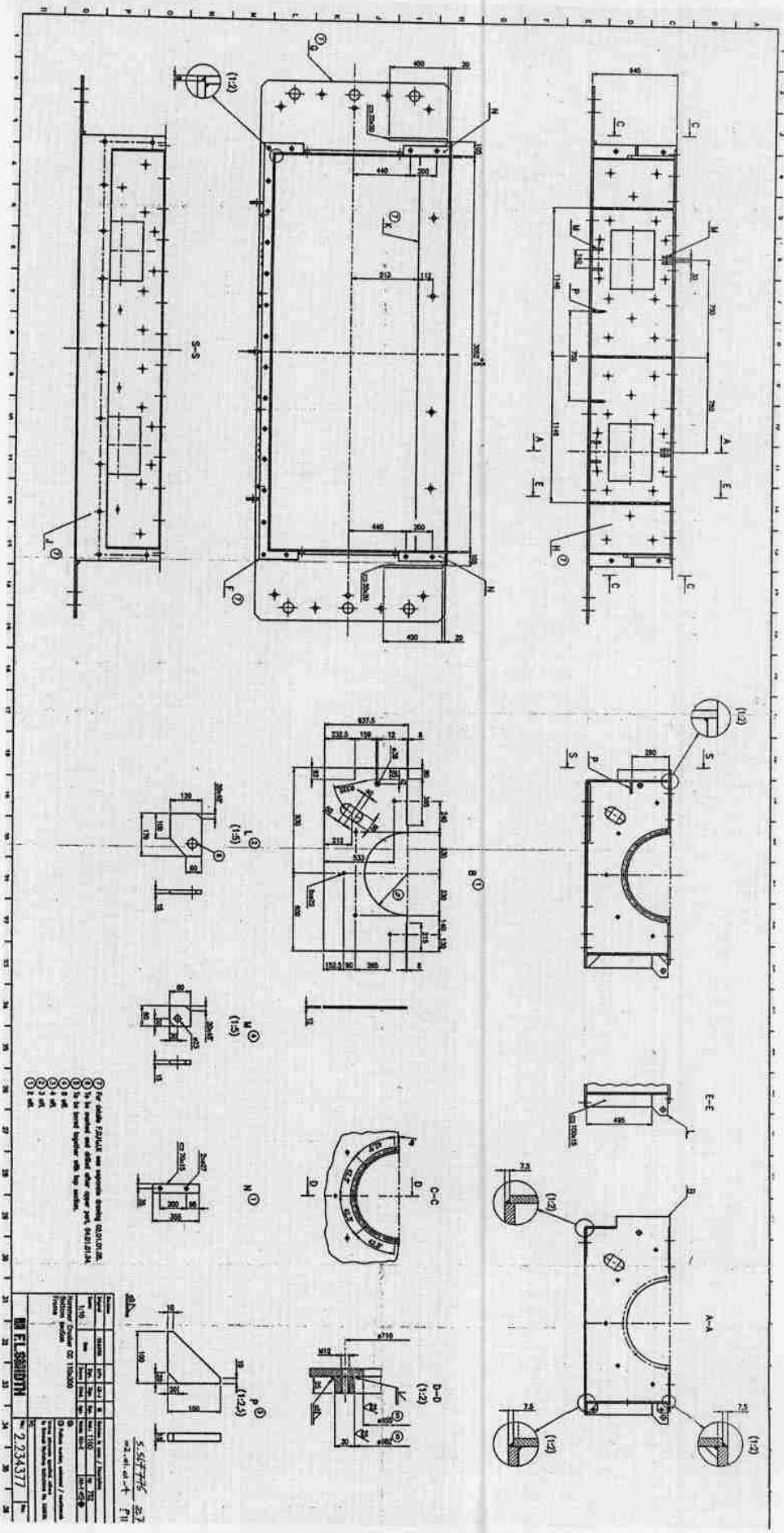
Section	Original	Scale	Date	Drawn	Sign.	Checked	Approved	OS	Machine n. zone / Description
Hammer Crusher OC 110x300	00AUM00	1:10							Machine n. zone: / Description
Bottom section									Machine n. zone: / Description
Wear plate									Machine n. zone: / Description

F.L. SMITH No. 2234376 Rev.

Pattern number, embossed / countermark
Using aluminum specific, refer to General Workshop Instructions No. 520533.

Grid lines A through M and 1 through 18.

اساتر کتایب و ادوات



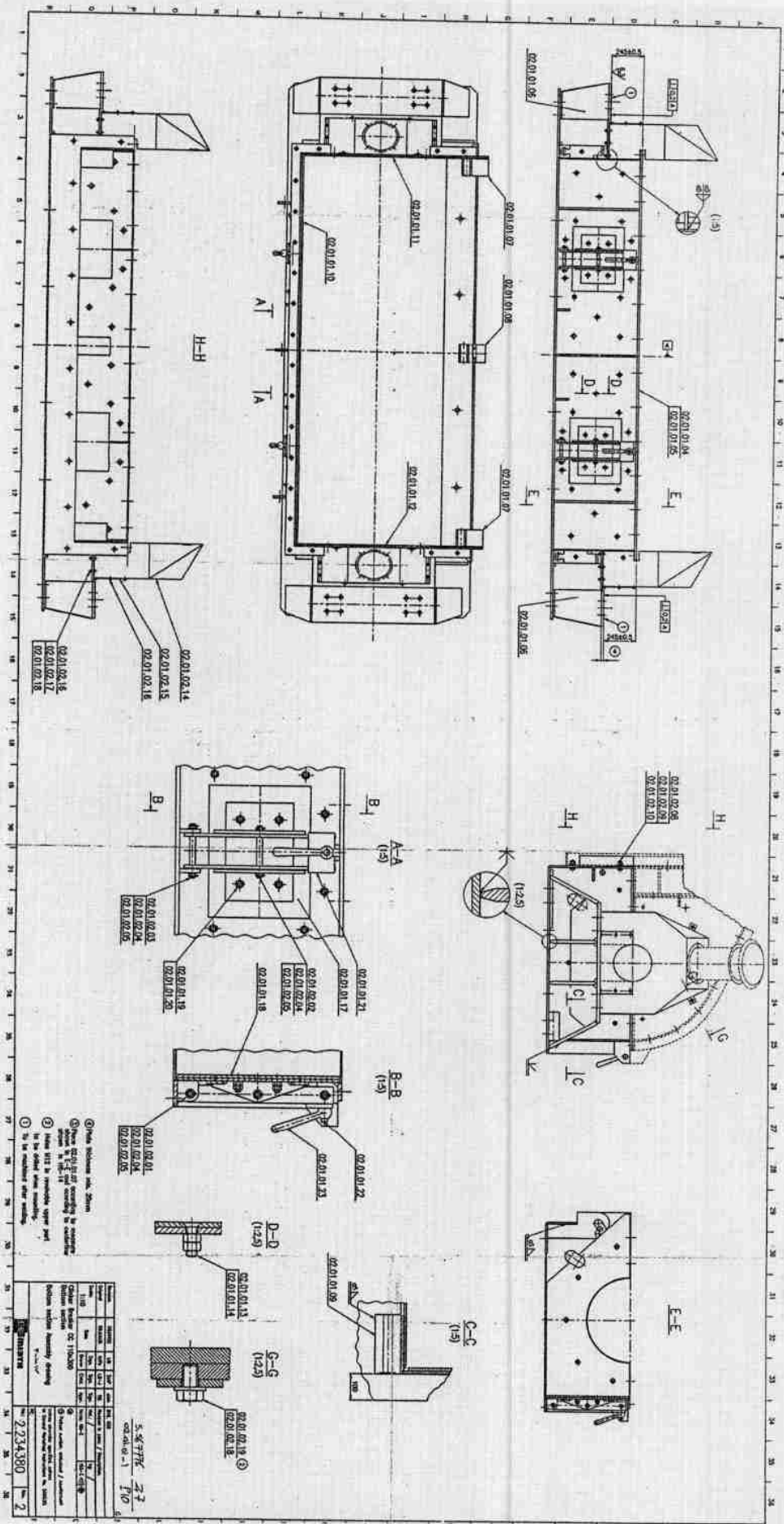
- 1- For details see drawings 02.01.01.01.
- 2- To be executed and checked after repair work.
- 3- To be checked together with the contractor.
- 4- To be checked together with the contractor.
- 5- To be checked together with the contractor.
- 6- To be checked together with the contractor.
- 7- To be checked together with the contractor.
- 8- To be checked together with the contractor.

5.547745 22.2

02.01.01.01 F11

No. 2234377	
Project	...
Client	...
Architect	...
Scale	...
Date	...
Sheet No.	...
Total Sheets	...
Project No.	...
Client No.	...
Architect No.	...
Scale	...
Date	...
Sheet No.	...
Total Sheets	...
Project No.	...
Client No.	...
Architect No.	...
Scale	...
Date	...
Sheet No.	...
Total Sheets	...

Handwritten notes at the top of the page, possibly indicating a revision or specific instructions.

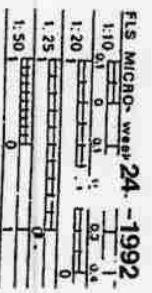
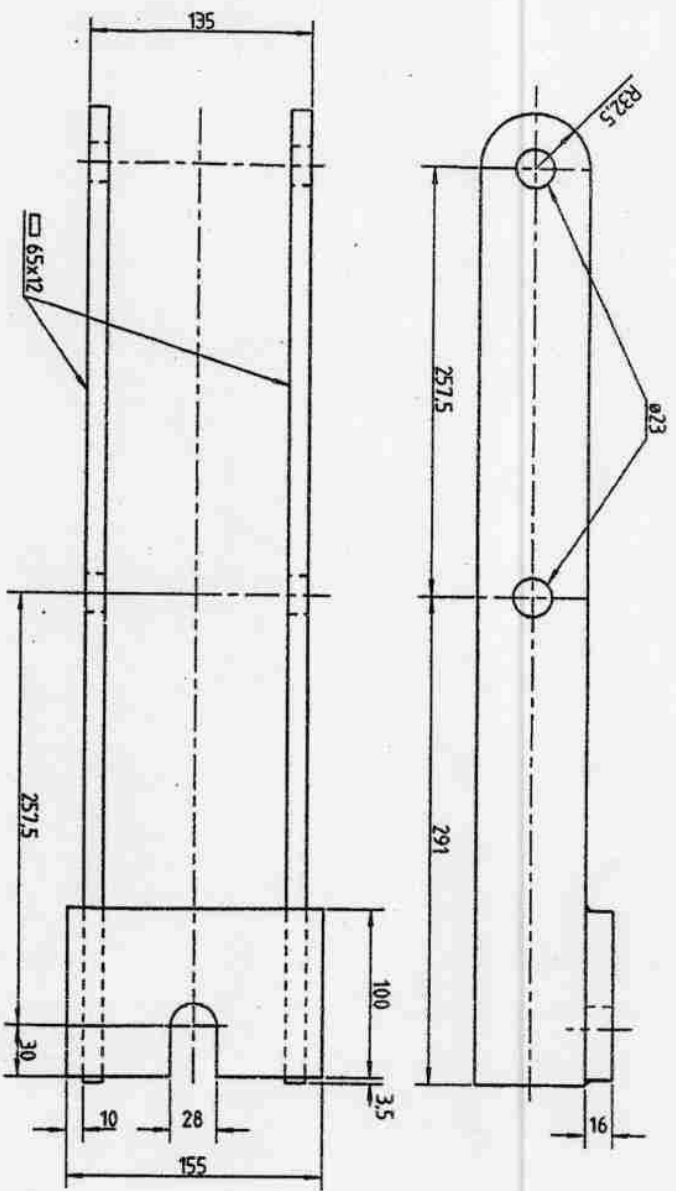


کاربرگ فنی

Die in der Anweisung S20530 angeführten Normen sind einzuhalten
 ⊗ Modellnummer: erhöhen / einglassen

Les normes des instructions S20530 doivent être respectées
 ⊗ Numéro de modèle, en relief / en creux

Debun seguir exactamente las normas dadas en las instrucciones S20530
 ⊗ Número de modelo, en relieve / en hueco



5.567776 27
 02.01.01-21 P15

⊗ Poltern nummer
 enhöjnings / countersunk
 Standard i instruktion S20530
 must be adhered to

⊗ Modellnummer,
 ophøjlet / forsankelet
 Normer i instruktion S20530
 skal overholdes

F.L. SMIDTH

Hammer Crusher FK 110x460

Bottom section

Arm

SCALE	KG 9	MAT. 110	NO.	REV.	IN ZONE	SIGN.	DATE
1:25	⊗	⊗	3.073817	1			
	/	ISO-E		2			
		WELDISO-E		3			
				4			
				5			
				6			

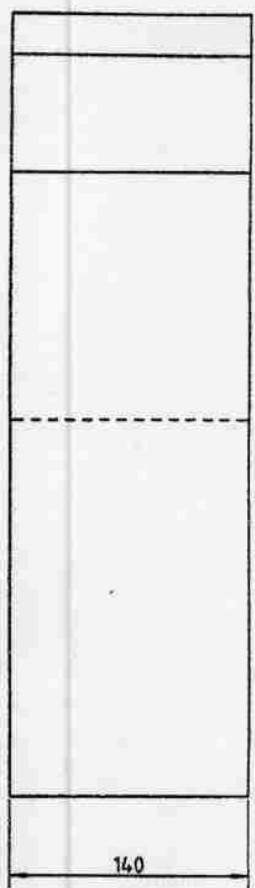
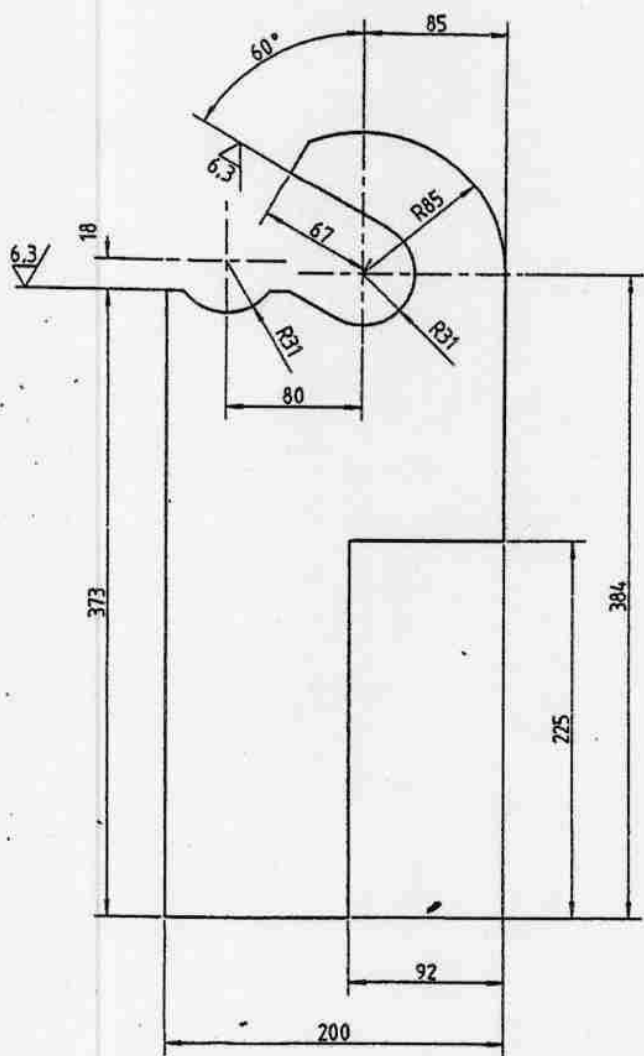
CAD: TDR/HFK/35

Handwritten note at the top center of the page.

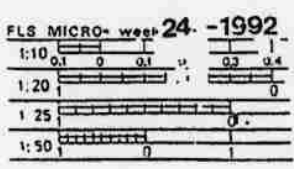
Die in der Anweisung 520530 angeführten Normen sind einzuhalten
 Modelnummer, erhaben / eingelassen

Les normes des instructions 520530 doivent être respectées
 Numéro de modèle, en relief / en creux

Deben seguirse exactamente las normas dadas en las instrucciones 520530
 Número de modelo, en relieve / en buco



5.567776 27
 02.01.01-7 P12



F.L. SMIDTH		6			
Hammer Crusher		5			
Bottom section		4			
Bracket for breaker plate		3			
		2			
		1			
SCALE:	KG 65	MAT. 110	REV.	IN ZONE	SIGN. DATE
1:2.5	<input checked="" type="checkbox"/> /	ISO-E			
SIGN. <i>Flem</i>	DATE 28.05.92	WELDS: ISO-E	NO. 3.120456		
CAD: TDR.HCFK.46					

Pattern number, embossed / countersunk
 Standards in instructions 520530 must be adhered to

Modelnummer, ophejlet / forsynket
 Normer i instruktion 520530 skal overholdes

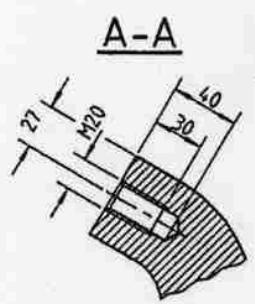
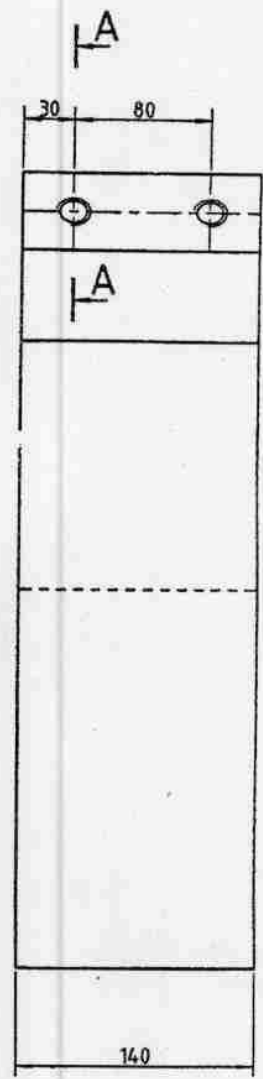
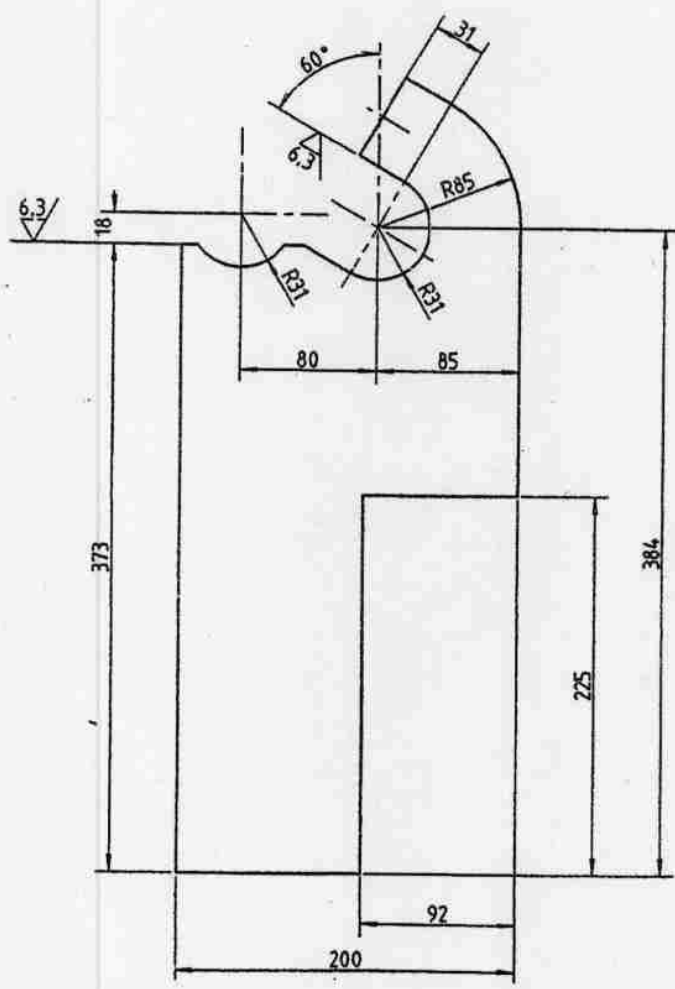
VARIANT OF	F	SIGN.	DATE
------------	---	-------	------

Handwritten signature

Die in der Anweisung 520530 angeführten Normen sind einzuhalten
 ⊗ Modelnummer, erhaben / eingelassen

Les normes des instructions 520530 doivent être respectées
 ⊗ Numéro de modèle, en relief / en creux

Deben seguirse exactamente las normas dadas en las instrucciones 520530
 ⊗ Número de modelo, en relieve / en hueco



A-A 5.567776 Z7
 02.01.01-8 P13



F.L.SMIDTH		6			
Hammer Crusher		5			
Bottom section		4			
Bracket for breaker plate		3			
		2			
		1			
SCALE:	KG 64	MAT. 110	REV.	IN ZONE	SIGN. DATE
1:25	⊗ /	ISO-E	NO.	3.120457	
SIGN. <i>Flama</i>	DATE 26.5-92	WELDS: ISO-E			
CAD: TOR.HCFK.47					

⊗ Pattern number, embossed / countersunk Standards in instructions 520530 must be adhered to

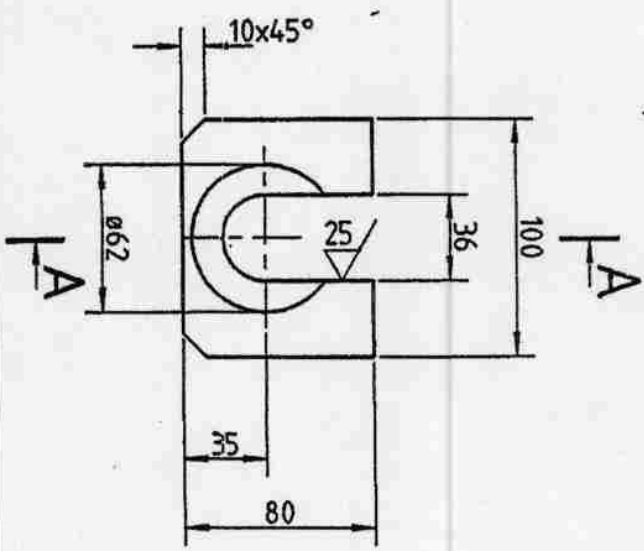
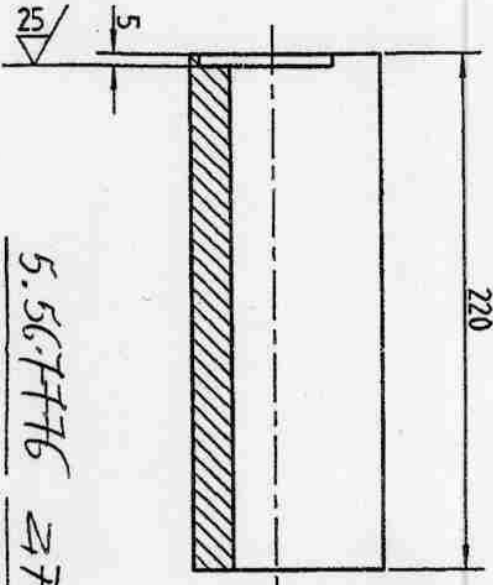
⊗ Modelnummer, ophejet / forsenket Normer i instruktion 520530 skal overholdes

VARIANT OF F SIGN. DATE

Die in der Anweisung 520530 angeführten Normen sind einzuhalten
 Modelnummer, erhaben / eingelassen

Les normes des instructions 520530 doivent être respectées
 Número de modèle, en relief / en creux

Deben seguirse exactamente las normas dadas en las instrucciones 520530
 Número de modelo, en relieve / en hueco



5.56.7776 ZF
 02.01.01-9 P13

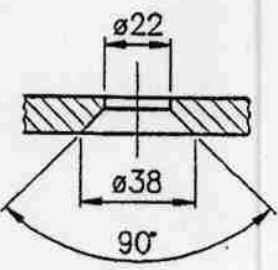
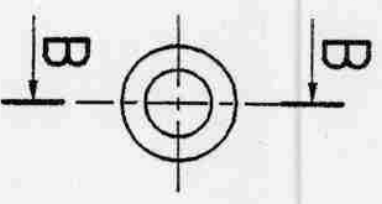
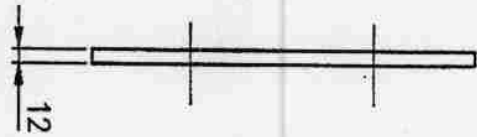
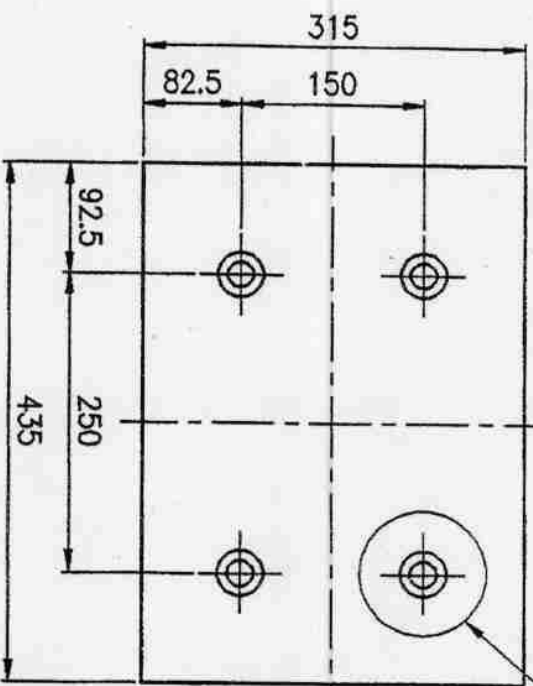
FLS MICRO we24 -1992

⊗ Pattern number, embossed / countersunk Standards in instructions 520530 must be adhered to

⊗ Modelnummer, oplyst / forsanke Normer i instruktion 520530 skal overholdes

SCALE:		KG 10	MAT. 110	REV.	IN ZONE	SIGN.	DATE
1:2.5		/	ISO-E	1			
SIGN. <i>Fenn</i>		DATE 24.5.02	WELDS: ISO-E	NO. 4.093860			
CAD: TDR.HCEK.4.8							
F.L. SMIDTH		FK 110x460		6			
Hammer Crusher				5			
Bottom section				4			
Guide Block				3			
				2			
				1			

Handwritten notes at the top of the page.



A
(1:2)

B-B
(1:2)

5.567776 ZF
02.01.01-18 P15

Rev. 3									
Rev. 2									
Rev. 1	03.09.98	PSL	16.09.98	GLN	16.09.98				BE
Original	28.01.97	APA	31.01.97	APA	31.01.97				BE
Scale:									
1:5									
	Designed		Checked		Approved				
Hammer Crusher CC 110									
Bottom section									
Wear plate									

F.L. SMIDTH

FLS dwg. No.: 4.206050

Group no: 02.01

Where nothing else is stated, adhere to general instructions No. 520530.

⊗ Pattern number, embossed / countersunk

Welds: ISO-E ISO-E

Mat.: 115 kg: 14

Revision in zone: / Description:

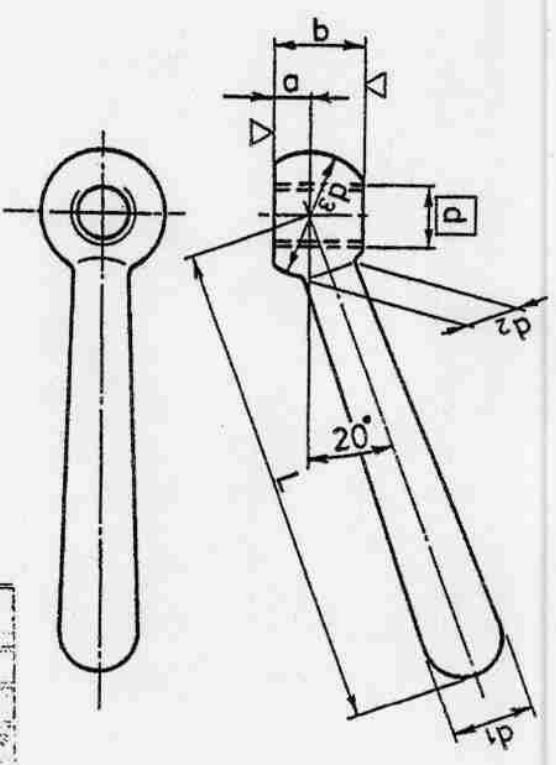
F1: Mat. changed

کارتنی پیکر

Die in der Anweisung 520530 angeführten Normen sind einzuhalten

Die mit \approx bezeichneten Maße sind Richtmaße. Handelsware, z. B. N DIN 99, kann verwendet werden. Umräumte Maße: siehe Stückliste oder Bestellung.

(1) Kugel



Les normes des Instructions 520530 doivent être respectées

Les cotes précédées de \approx sont pour gouverner seulement. Un article courant comme p. ex.: _____ peut être utilisé. Pour les cotes encadrées, voir nomenclature ou commande.

(1) Bille

Deben seguirse exactamente las normas dadas en las instrucciones 520530

Las medidas con \approx son de orientación solamente. Puede emplearse un artículo corriente, p. ej. N DIN 99, _____ Para las medidas encuadradas, véase lista de piezas o nota de pedido.

(1) Bola

d	a	b	d ₁	d ₂	d ₃	(1)	L
M10	6	15	13	9	20		80
M12	7,5	19	16	11	25		100
M16	10	25	20	15	32		125
M20	12,5	31	25	18	40		160
M24	18	41	32	22	50		200

5.567776 27
02.01.01-23 P15



(1) Kugle

(1) Ball
For framed dimensions, see parts list or order.
Stock quality such as _____ may be used.
Dimensions preceded by \approx are for guidance only.
Standards in instructions 520530 must be adhered to

Indrømmede mål: se stykliste eller ordre.
Hendelsvare, t. eks. N DIN 99, kan benyttes.
Mål med \approx er kun til orientering.
Normer i instruksjon 520530 skal overholdes

St M-53B-4

F.L.SMIDTH **FLS**

Clamping levers, tapered pattern

Mål 130	No. 7.000071
PKr 8.75	

Handwritten signature

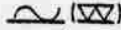
Sinnbilder und Kurzzeichen siehe Anweisung Nr. 520530.
Die mit \approx bezeichneten Maße sind Richtmaße.
Handelsware, z. B. B DIN 444, kann verwendet werden.
Umrahmte Maße: siehe Stückliste oder Bestellung.

Légendes et symboles: voir instruction n° 520530.
Les cotes précédées de \approx sont pour gouverne seulement.
Un article courant comme
p. ex.: _____ peut être utilisé.
Pour les cotes encadrées, voir nomenclature ou commande.

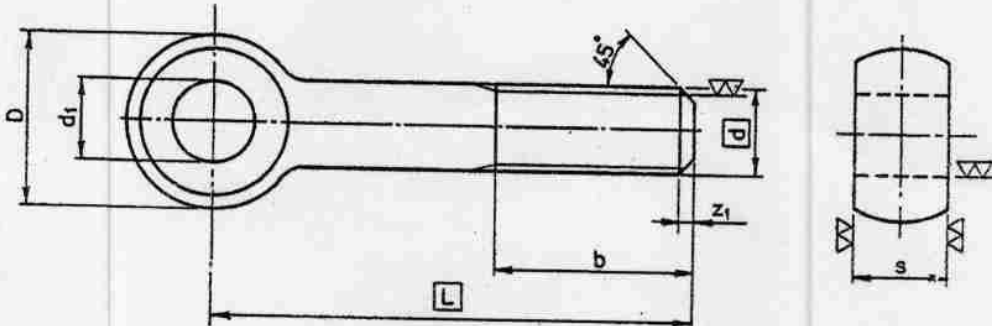
Para leyenda: véase instrucción núm. 520530.
Las medidas con \approx son de orientación solamente.
Puede emplearse un artículo corriente,
p. ej. B DIN 444.
Para las medidas encuadradas, véase lista de piezas o
nota de pedido.
Rozmiar: Klasa de tolerancja ISO 6g

Gewinde: ISO-Toleranzfeld 6g

Filetage: Tolérance ISO 6g



$d \times L$



d	M6	M8	M10	M12	M16	M20	M22	M24	M27	M30	M33	M36	M39	
b	L \leq 125	18	22	26	30	38	46	50	54	60	66	72	78	84
	L $>$ 125 L \leq 200	24	28	32	36	44	52	56	60	66	72	78	84	90
	L $>$ 200			45	49	57	65	69	73	79	85	91	97	103
d ₁ D10	6	8	10	12	16	18	20	22	24	27	30	33	36	
D	14	18	20	25	32	40	42	45	50	55	60	65	70	
s	7	9	12	14	17	22	24	25	27	30	34	38	41	
z ₁	1,5	1,8	2,2	2,5	3	3,5	3,5	4,5	4,5	5	5	6	6	

5.567776 27
02.dl.01-22 P15



Thread: ISO tolerance class 6g
For framed dimensions, see parts list or order.
Stock quality such as _____
may be used.
Dimensions preceded by \approx are for guidance only.
For signs and symbols, see instruction No. 520530.

Gewinde: ISO toleranzklasse 6g
Indrømmede mål se sticlste eller ordre.
Handelsware, f. eks. B DIN 444, kan benyttes.
Mål med \approx er kun til orientering.
Signatur og symboler: se instruksjon nr. 520530.

F. L. SMIDTH

Eye bolts

Mat. 130 (4,6)	No. 7.000122
PKz 7.75	